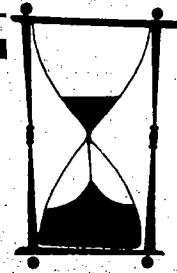


The Messenger

Number 10, October 1986



The Chesterfield Historical Society of Virginia, P.O. Box 40, Chesterfield Courthouse, Virginia 23832

Chesterfield Museum Celebrates 25 Years of Growth

Residents of Chesterfield take great pride in celebrating the 25th anniversary of the Chesterfield Museum. The museum had its beginnings as a vision of the Bermuda Ruritan Club in the late 1950's. Under the chairmanship of Frederick H. Pease, seven other Ruritan Clubs joined together and began the collection of artifacts.

With the endorsement of the Board of Supervisors, a ten-member Advisory Committee for the operation of a county museum was appointed on November 8, 1961 - the birth of the Chesterfield County Museum.

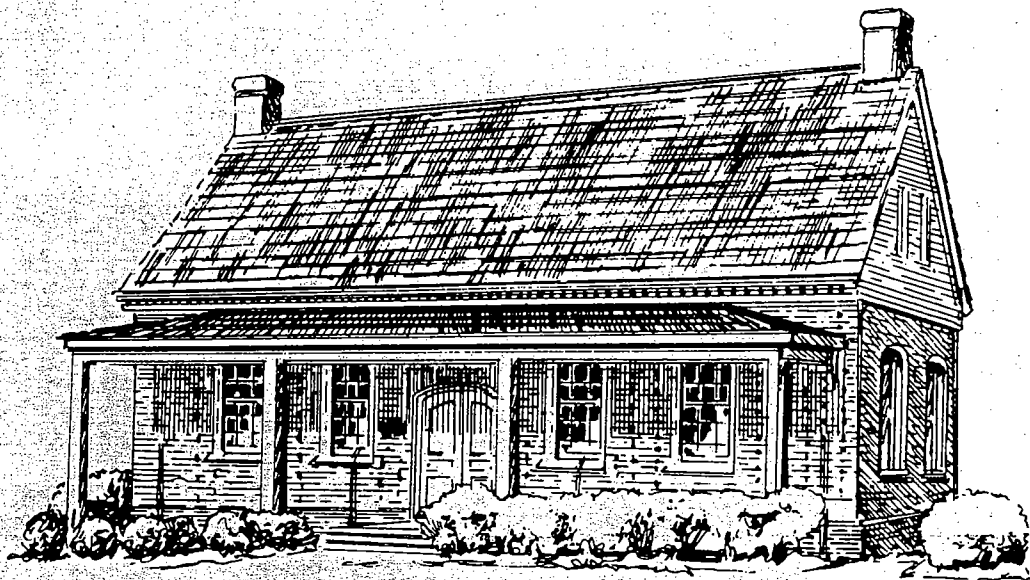
The Advisory Committee included one member from each of the Ruritan Clubs, one member at large, and one member from the Board of Supervisors. Mr. Pease was elected chairman, a position which he held for the following 10 years.

Display cases were placed in the corridors of the courthouse for exhibiting the collection of artifacts. Historical pictures were framed and hung on the nearby walls.

These exhibits grew for many years until the decision was made in 1975 to construct a special building to house the

museum collection. As a Bicentennial project, citizens, corporations, and the county government joined resources to construct a replica of the first county courthouse of 1750. The structure was completed in time for its dedication on July 4, 1980.

Today, the varied collection continues to grow as the Chesterfield Museum serves increasingly greater numbers of visitors. New exhibits are mounted and existing ones are enlarged as the Museum strives to preserve the history of the county and to educate a growing population in the heritage which we all have in common.



The Chesterfield County Museum Silver Anniversary 1961 - 1986

Meeting Notice

*Society Membership to Meet
October 26 on Court Green*

The next regular quarterly Membership Meeting of the Chesterfield Historical Society will be held on Sunday, October 26, at 3:00 in the afternoon on the Court Green at Chesterfield Courthouse.

The meeting will celebrate the 25th Anniversary of the Chesterfield Museum. The speaker for the event will be Mr. Chris Calkins, Park Historian for the Petersburg National Battlefield.

Portraits of the four Confederate generals from Chesterfield County will be unveiled and presented to the Museum. The generals include Edward Johnson, Henry Heth, David A. Weisiger, and Young M. Moody.

Guests are encouraged to bring a lawn chair to the program. The Society looks forward to celebrating a quarter-century of collecting and preserving the rich history of Chesterfield.

Record Crowds Visit Museum Complex

Volunteers Make It All Possible

The Chesterfield County Museum Complex includes the County Museum, the Old Jail, the Magnolia Grange Museum House, and sites and monuments around the Courthouse Square. Visitors are welcomed on a regular basis, and the numbers of visitors have been consistently climbing.

In the last three years, visitors have increased from 2,231 in 1983 to 3,371 in 1984. By the year 1985, over 5,000 visitors toured the Museum Complex. At the end of August this year, 4,864 people had visited these attractions, thus predicting a record year for 1986 with a chance of receiving between 8,000 to 10,000 guests! And Christmas is a busy season!

The overwhelming success and growth of the the Museum Complex is due, to a large extent, to the dedication of about 70 volunteers who serve as interpreters at the museum, clerical aides in the offices of the Historical Society, and docents at the Magnolia Grange Museum House.

These volunteers willingly give of their time to support the many projects of the Museum and the Historical Society. There is always room for one more! If you are interested in serving in a volunteer capacity at any of these sites, contact Museum Coordinator Lucille Cheatham Moseley at the Museum.

Interpreters in the Museum include Cary Adams, Thelma Beachley, Lona Bowen, Frances Bratt, Dorothy Charles, Marquerite Christian, Elizabeth Hardjan, Dorothy Hawkins, Preston Holmes, Irene McDaniel, Buddy McGuire, Maurice Meyer, Hazel Morris, Ed Moseley, Mary Palmore, John Royall Robertson, Gay Robinson, Carrie Rogers,

Nancy Sawyer, Mabel Sullins, Olin Taylor, Karen Waldron, Elaine Williams, Ruby Williams, and Betty Zavernick.

Docents at Magnolia Grange include Esther Bass, Thelma Beachley, Irene Bissett, Frances Bratt, Mary Burdick, Mildred Daffron, Beverly Davis, Natalie Day, Lloyd Dunnivant, Nancy Dunnivant, Gee Gee Gates,

Clare Hobson, Mary Ellen Howe, Rita Johnson, Gordon Jonas, Mary Elizabeth Jonas, Rovena Jones, Frances MacKenzie,

Beverly Mays, Hazel Morris, Alicia Pedersen, Margaret Robertson, Jeannette Southall, Alyson Taylor-White, Mary Jones, Irene McDaniel, Helen Vaden, Pauline Winfree, and Perkins, Donna Schniederl, Robb Woodcock.

Volunteers in the offices of the

Chesterfield Historical Society at the Old Jail include Marguerite Adams, Margaret Burgess, Hazel Cole, Nancy Dunnivant, Patsie Grady, Helen Goyne, Dorothy Hawkins, Bill Johnson, Elizabeth Johnson, Diane Jones, Rovena Jones, Irene McDaniel, Helen Perkins, Donna Schniederl, Diane Turlington, and Angie Wilderman.

Museum Complex May Host 10,000 Visitors in 1986



Magnolia Grange is a Federal-period plantation house located directly across from Chesterfield Courthouse. Built in 1822 by William Winfree, the brick edifice has long been associated with courthouse activities and with the families of Winfree, DuVal, and Cogbill. The restored structure is now operated as a house-museum and is open to the public.

The photograph above shows (left to right) Julia Perdue, Mildred Perdue, and their mother Mrs. Walter N. Perdue. Mrs. Easter Carter is pictured in back.

Magnolia Grange Museum House is owned by the County of Chesterfield and is operated under the custodianship of the Chesterfield Historical Society of Virginia.

Gifts To Magnolia Grange Since May 4, 1986

Edward L. Knight, Jr.	Feather mattress
Mrs. Nancy Dunnavant	Hand towels and baby quilt
Mrs. Mason Cole	Painting: "Point of Rocks"
Rev. Robert Lineberger	Books
Mr. and Mrs. Gordon Jonas	Pointer flashlights
Mrs. Ethel Ahern	Hand towels
Mrs. Ernest P. Gates	Candlestick
Adams Antiques	Painting: "Courtroom"
Clifton Robertston	Zuleime DuVal's Lace Handkerchief
Mrs. Mildred Daffron	Bohemian glass liqueur set
Mrs. Mary Burdick	Needlepoint footstool, books
Mrs. Mary Ellen Howe	Silver flatware
Mrs. Mary Vaden	Silver flatware, desk lamp
Mrs. Roy E. Bishop	Silver compote, silver flatware
Mrs. Bev Mays	Walnut towel rack
Dr. Harrison Moseley Etheridge	Double sleigh bed
Mrs. Margaret Bushnell III	Empire mahogany sideboard and 8 Empire dining chairs
Mr. James C. Farley	3 maps, Farrar's Island area.

Magnolia Grange Museum House Receives H.R.F. Preservation Award

The Historic Richmond Foundation recently honored the County of Chesterfield and the Chesterfield Historical Society with a "Preservation Citation for Restoration" for their efforts to preserve and restore the Magnolia Grange Museum House at Chesterfield Courthouse.

Preservation Citations for Restoration were presented to nine projects in the Richmond area which exhibit excellence to restoration and commitment of the parties involved. Dr. R. Peter Mooz of the Wilton Museum recognized for his consultation on the Magnolia Grange project.

During the luncheon at St. Paul's Episcopal Church in Richmond, A. Howe Todd, Rich-

mond's former assistant city manager, was honored for his long-term leadership in the preservation and development of Richmond's historic amenities. Todd received the Foundation's Mary Wingfield Scott Preservation Award for his continuing commitment to the development of the riverfront and his support of city historic districts and landmarks.

The Award of Achievement was presented to the owners of the Jefferson Sheraton Hotel for technical excellence in the application of restoration techniques and sensitivity in the design and incorporation of new elements, services, and additions.

Primitive Artists To Show Work In Magnolia Grange Gallery

On October 31-November 28, the Magnolia Grange Museum House will host an exhibit of the works of primitive-style artists from the Bon Air Artists Association. Their paintings will be displayed for one month in the gallery space in the upstairs hall.

The artists include Ann Murphee Allen, Martha Allen, Sally

Rusak, and Gladys Farmer. Mary Marshall is president of the Bon Air Artists Association.

Be sure to see this exhibit during the month of November. An added bonus is to see the many changes and additions to the museum house which have taken place during the last months.

Welcome New Members *We're Glad to Have You!*

The following people have joined the Society since the May 4 meeting (over the last two quarters):

Mr. and Mrs. Edward C. Brown
Midlothian, Virginia

Dr. and Mrs. William P. Wagner
Richmond, Virginia

Ms. Theodora Cogbill
Chesterfield, Virginia

Mr. and Mrs. Robert A. Hitch
Chester, Virginia

Ms. Theo T. Cogbill
Chesterfield, Virginia

Mr. and Mrs. Gabriel Pascarella

Mr. and Mrs. Wayne Moore
Chester, Virginia

Colonial Restoration & Waterproofing,
Incorporated
Colonial Heights, Virginia

Mr. and Mrs. A. Winston Winfree
Richmond, Virginia

Mr. Bradford S. Hammer
Richmond, Virginia

Mr. and Mrs. Michael Elliott
Midlothian, Virginia

Mr. Randolph C. Phelps
Richmond, Virginia

Mrs. Elizabeth Winfree Quaiff
Richmond, Virginia

Ms. Jeannette W. Southall
Colonial Heights, Virginia

Mr. Linwood Davis
Richmond, Virginia

Ms. Emily J. Salmon
Richmond, Virginia

Mr. and Mrs. Reese Cunningham
Richmond, Virginia

Mr. Charles E. Jackson
Chester, Virginia

Ms. L.S. Chalkley
Richmond, Virginia

Mrs. Lois C. Lynch
Chester, Virginia

Mr. Maurice J. Meyer
Midlothian, Virginia

Mr. and Mrs. Joseph P. Ragland
Richmond, Virginia



The Chesterfield Historical Society Welcomes CHRISTMAS

Artists Will Cut 19th Century Silhouettes During Holiday Festivities at Magnolia Grange

The Magnolia Grange Museum House will be welcoming some special visitors to help in the Christmas celebrations. Helen and Nell Laughon, professional silhouette artists, will be at the plantation house on Saturday, December 13, from 10 a.m. until 4:30 p.m. They will be cutting silhouettes of both adults and children using the methods of the early 19th century.

Reservations are encouraged, since many people will be seeking silhouettes to give as special gifts during the holiday season. Silhouettes will be priced at \$15 per person (two copies), and \$13 for each additional child in the same family.

Silhouetting was the least expensive and most popular form of portraiture during the 17th, 18th, and early 19th centuries. Shades, shadows, and profiles, as they were called until 1839, were cut by family members, itinerant artists, and trained artists.

There were three types of silhouettes: hollow cut, that were backed with black material; cut and paste; and inked or painted. The most popular size was between 2 and 3 inches. When the camera was invented in 1840,

the popularity of silhouettes began to decline.

As a 19th century plantation house, Magnolia Grange seems a perfect site for Helen and Nell to demonstrate their historic

craft. In the early 1800's, many Virginia plantations welcomed itinerant silhouette artists "cut" members of their family. Magnolia Grange now boasts among its collection four hollow-

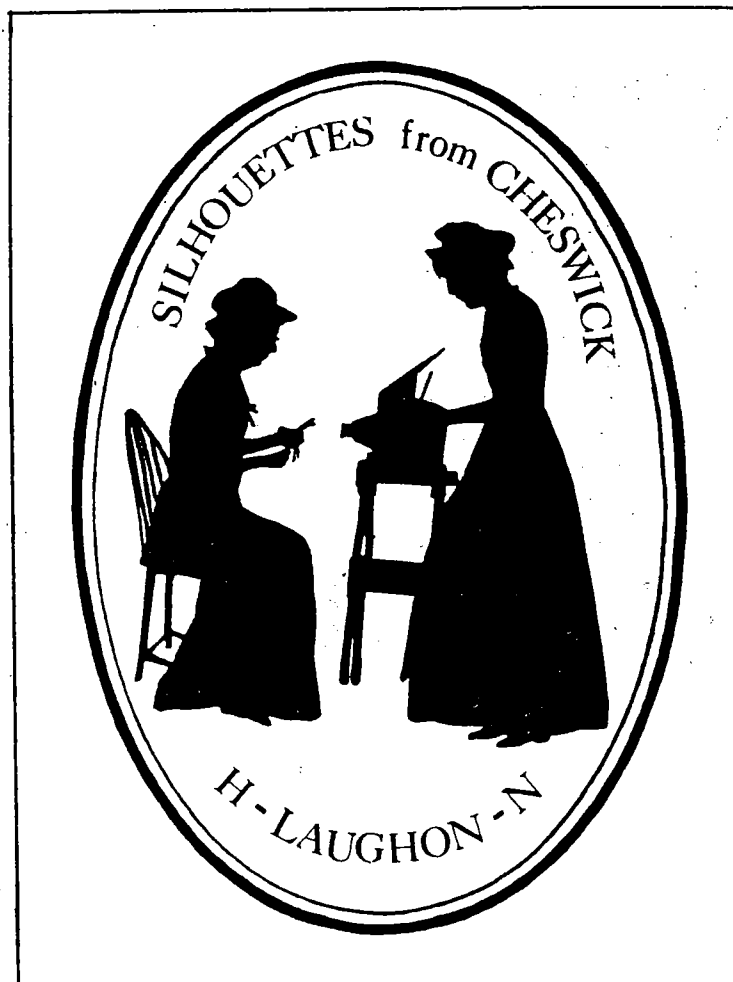
cut silhouettes from the studio of Charles Wilson Peale. Artists such as Peale used mechanical aids such as a physiognotrace, a camera obscura, and the stork-beak (pantograph).

Helen and Nell Laughon will draw your silhouette with the aid of a camera obscura and it will be cut by hand. They have been cutting professionally since 1969, and their travels have taken them to cut at the National Portrait Gallery, the Corcoran, the Smithsonian, the Boston Athenaeum, Old Sturbridge, Old Salem, Shakertown, and Richmond's Valentine Museum.

Some of their well-known personalities cut from life have included two presidents - Ford and Nixon, plus governors, justices, and sports figures. They have cut silhouettes of buildings and even animals, such as the famous racehorse Secretariat.

The Laughons enjoy "ordinary folks" as much as celebrities. "Whoever we are doing at the time, that person is the most fun," says Nell. "Everybody is so different that it makes each silhouette a unique experience."

Reservations may be made by calling the Chesterfield Museum or the Magnolia Grange Museum House.





Gift Ideas *with of touch of Old Chesterfield*

Soon will be the time of year when many people search high and wide to locate those "perfect" holiday gifts for friends and relatives. Shopping can be easy if one chooses to select the unique gifts offered by the Chesterfield Museum and the Chesterfield Historical Society.

A special gift would be an annual membership in the Chesterfield Historical Society. Available for just \$10.00 per year, a membership includes education, entertainment, and interesting publications. Moreover, your membership dues help to support many of the special projects of the Society.

The Chesterfield Museum is offering their most recent publication, a booklet entitled "Sir Thomas Dale." Written by Dr. Louis Manarin, the collector's book reports on some very thorough research on one of the "first founders" of Chesterfield.

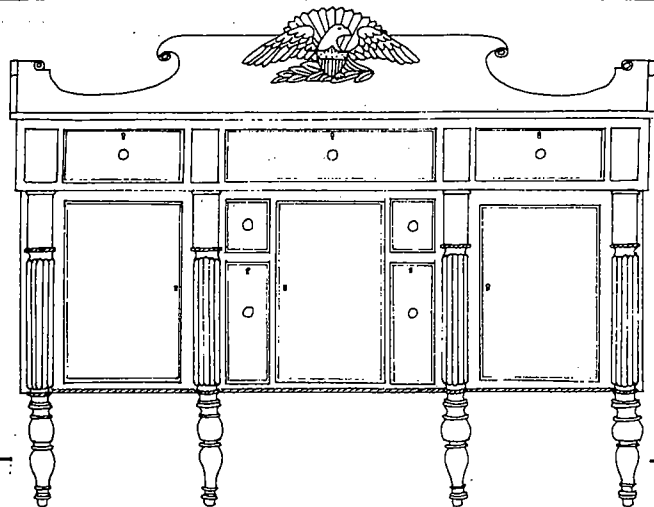
Copies are available at the Museum for \$3.00 per copy.

The Chesterfield Historical Society offers many gift ideas, including a reproduction of an 1888 map of Chesterfield for \$13.00. Suitable for framing, the map is a veritable treasure of old communities, farms, and roads. Also available at the Society offices are boxes of historical scenes reproduced on notepaper. These courthouse area views are by Mary Stokes and are priced at \$3.00 per box.

The addition of Magnolia Grange Plantation to the Museum Complex has introduced a large collection of pewter items honoring the "magnolia blossom." These items include paper weights (\$15.00), stick pins (\$12.00), pierced earrings (\$16.00), bookmarks (\$12.00), tie tacks (10.00), and necklaces (\$15.00). These pewter items are hand cast here in Chesterfield and are fast becoming collector's items.

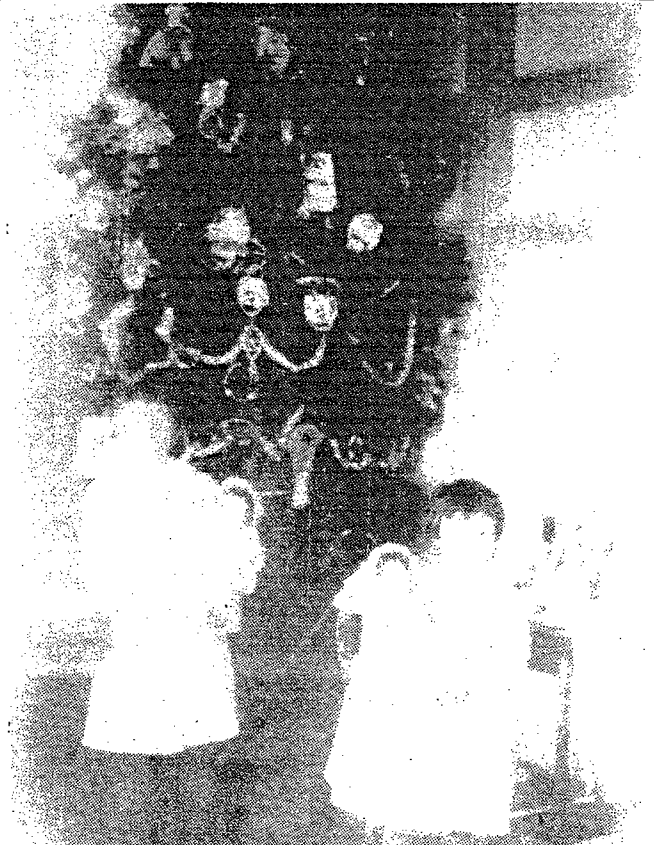
Also available at Magnolia Grange are packages of stationery depicting the front of the old Federal-style plantation house itself. This notepaper is priced at \$3.00 per package.

These popular items are available at the Old Jail, the County Museum, and the Magnolia Grange Museum House during their regular hours of operation. Do your Christmas shopping early! Historical gifts are a visual statement of your personal support of preservation in Chesterfield.



Federal Sideboard

This mahogany sideboard was made c. 1810 and features reeded legs and a carved eagle motif on the gallery. It comes from the Littlepage family and now finds a permanent home at Magnolia Grange, thanks to donor Ethel Ahern of Moseley. The drawing is by Susan Woodcock.



Little Julia and Mildred Perdue show their Christmas dolls c. 1921 at Magnolia Grange. The tall decorated cedar tree stands before the ballroom doors.



19th century hollow-cut silhouette from New Kent County, Virginia.

The Messenger of

The Chesterfield Historical Society of Virginia
Director of Publications Mary Ellen Howe
Guest Editor Robb Woodcock
Consultant Lucille C. Moseley

ISS #0731-3012

